

THERMAL LAMINATION AND FOIL FUSER MACHINE

Model : 35E

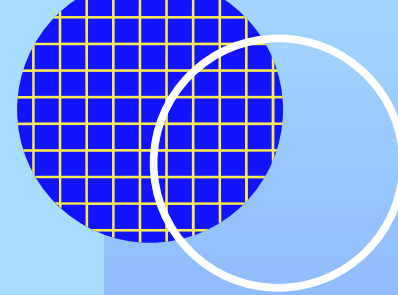
Max. Laminating Width: 350 mm

CONTACT US

☎ 9818239824 , 8920801990,
9211567476, 9971812791,
9599829036

✉ jindaloffset@yahoo.com

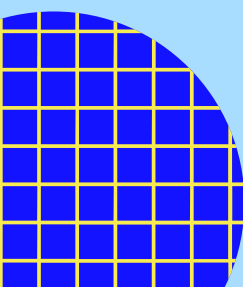
🌐 www.jindaloffset.com



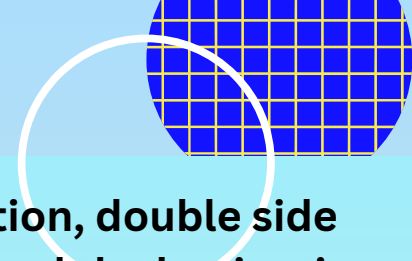


Click Here for Video :

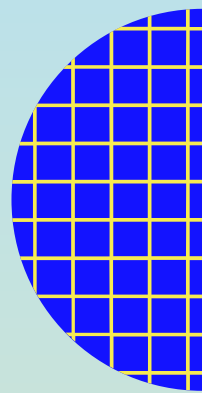
[Here](#) 



FEATURES



- Suitable for all kinds of paper laminating, roll to roll lamination, double side lamination, finished product winding, single side anti curling and the laminating effect is flat and does not bend.
- Multifunctioning body, with optional ironing function.
The conveyor belt feeds paper synchronously and the finished product is automatically wound up.
- Large diameter mirror steel roller, 100mm in diameter, chrome plated on the surface, the mirror effect is good.
- The laminating pressure is very compact, and the laminating effect is good, no bubbles, no snowflakes.
- Intelligent temperature control system, precise temperature control, the highest temperature is 160 degrees, temperature out of control alarm system, double protection.
- Large power 80W AC wheel box geared motor, which can rotate forward/reversely, without extreme speed regulation, the fastest laminating speed is 6m/min.



TECHNICAL SPECIFICATIONS

Max. Laminating Width	350 mm
Max. Laminating Thickness	2 mm
Laminating Speed	0~6m/min
Lamination	Both Sides
Hot Laminating Temperature	160 degree celsius
Display	LCD
Steel Roller Diameter	100 mm
Rubber Roller Diameter	75 mm
Heating method	Infrared Heating by Hot Air
Power	1600 W
Power Supply	AC220V, 50Hz