



**Model
BM300L**


**SIDE
GLUE**

Jindal Offset India Pvt. Ltd.

**PERFECT
BINDING
MACHINE**

Max. Binding Length : 320 mm

CONTACT US

 **9818239824, 9211567476,
9971812791, 8588058191,
9810115856**

 **jindaloffset@yahoo.com**

 **www.jindaloffset.com**

CE

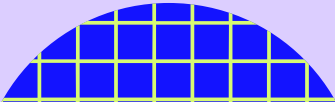
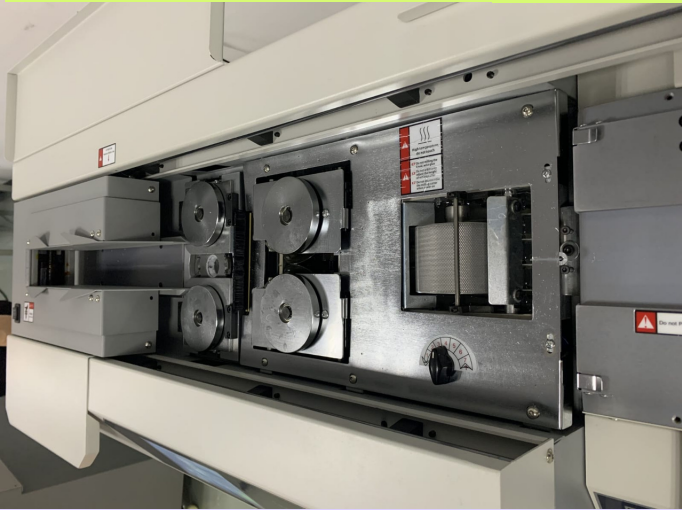
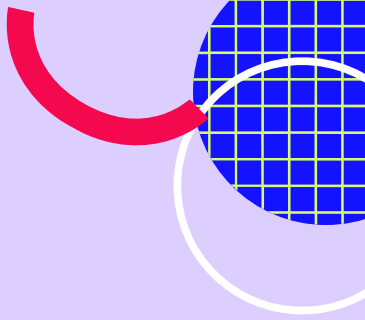
**Jindal[®]
HAMADA**

TECHNICAL SPECIFICATIONS

Max. Binding Length	320 mm
Max. Binding Thickness	60 mm
Glue Melt Time	about 20 mins
Binding speed	320 book/hour
Milling Cutter	Small Milling Cutter+Sun Milling Cutter
Glue Roller	Spine Glue Roller+Side Glue Roller
Glue Type	Manual&Automatic+fast mode
Display Mode	7 inch touch screen
Spine forming adjustment method	Knob with digital display
Power Supply	220V
Power	1200w
Paper Milling	two-fold
Machine size	1280*500*980mm
Gross weight	190kg

Click for Video :

[Here](#) 



Suitable for various A4, A3 short side soft book covers glue binding, binding thickness from 0.1mm to 60mm.



1. Upgraded Configuration, New Experience

- **7 inch Intelligent Touch Screen, More Intelligent;**
- **Dual Mode operation, one key switch, fast mode 8s/book;**
- **Digital Display of Book Spine Angle Adjustment.**

2. Independent Side Glue Tank design

- **Single Roller + Side Roller;**
- **Aluminium Glue Tank heated evenly;**

3. Human Centered Design and Environmentally friendly

- **No Pungent odor, environmentally friendly, no smoke;**
- **Double fan blades pipeline dust collection system to ensure less paper scraps and improve the performance of glue binding;**
- **High air flow, low power consumption, long lifetime.**

4. High Precise Configuration

- **10 teeth Alloy Milling Cutter+ 2 small milling cutter for durability performance;**
- **7 levels adjustment of glue control the glue thickness of the book precisely;**
- **New full scale tooth clamping structure torque motor control, the clamping surface is not easy to jam, ensure the forming stable.**