

# ELECTRIC PAPER CUTTING MACHINE

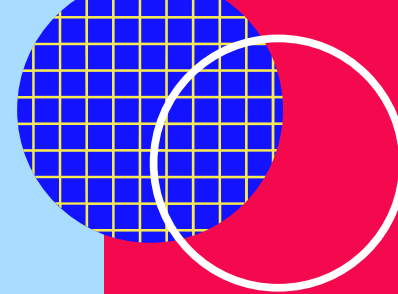
Model : 4606

## CONTACT US

☎ 9818239824 , 9211567476 ,  
9971812791, 8588058191,  
9810115856

✉ [jindaloffset@yahoo.com](mailto:jindaloffset@yahoo.com)

🌐 [www.jindaloffset.com](http://www.jindaloffset.com)

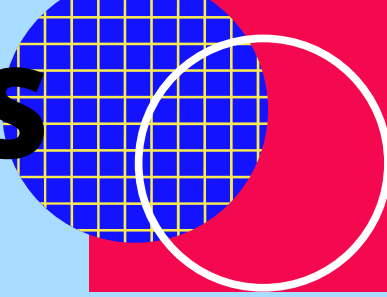




**Click Here for Video : [Here](#)**



# FEATURES



- Touch Screen & Programs
- Electric clamp and cutting Drive
- Reliable structure, higher accuracy
- CE Standard
- safety latch, safety light curtain
- Friendly man-machine interface , easy to control, powerful calculation
- Adjust blade outside of machine
- Auto push book, adjustable clamp pressure .



# TECHNICAL SPECIFICATIONS

Programme Control	YES
Max. Cut Size (mm)	460 x 460
Max. Cut Thickness	80 mm
Min. Cut Size	30 mm
Positioning Accuracy	± 0.1 mm
Cut Accuracy	± 0.4 mm
Touch Screen	7 inch
Paper Pressing	Electric
Paper Cutting	Electric
Backgauge Motor	Step Motor
Backgauge Speed	3 metres/min
Power	220V, 50Hz, 1150W
Dimensions (mm)	1020 x 780 x 1325
Weight	170 Kg

