

CORNER ROUNDING MACHINE

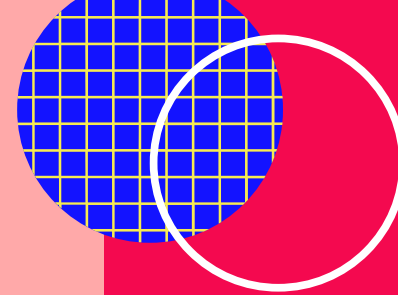
Model : DQ 80

CONTACT US

☎ 9818239824 , 9211567476 ,
9971812791, 8588058191,
9810115856

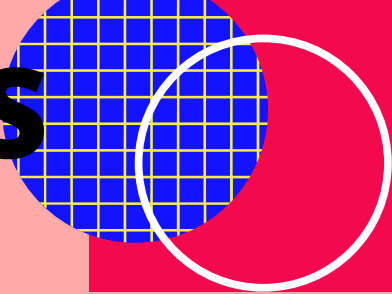
✉ jindaloffset@yahoo.com

🌐 www.jindaloffset.com

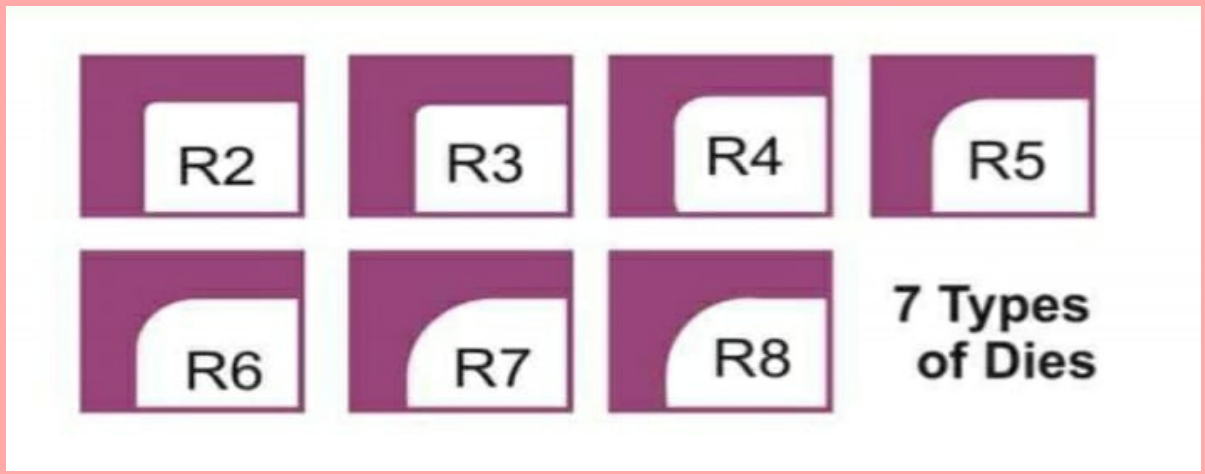


●○○ SHOT ON MI 9 SE
AI TRIPLE CAMERA

FEATURES



- Change one die fast in 1.5 seconds
- Works with Paper, Leather card, tag etc.
- Ideal for making the Album, Menu, Photo
- Book, Tender, Brand Label
- Foot Pedal operated.
- Built in waste basket
- Security button of changing dies



TECHNICAL SPECIFICATIONS

Capacity	80 mm
Speed	56 strokes/min
Available Dies	Built in 7 Dies (R2, R3, R4, R5, R6, R7, R8)
Power	220V/0.12KW
Motor	1400 circles/min
Machine Size	435 x 350 x 750 mm

Click Here for Video : [Here](#)

